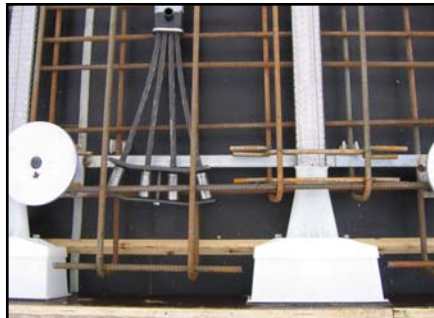




▲ SO 6-4 Tendon Preassembly.



▲ SO 6-4 tendon placing.



▲ Stressing and dead end anchorages.



▲ Smooth slab forehead after grouting.



▲ Pulling tendon, launching control desk.



▲ Pulling tendon brackets.



▲ Sliding bearing and lateral guides.

### VSL SCOPE OF WORKS:

- Transversal Post-tensioning.
- Launching of the decks
- Lifting for the bearing replacem.

### PROJECT TECHNICAL DATA

- Transversal P  
SO 6-4: 84t
- Temp. longitudinal PT  
Ec 6-7, 6-12: 14t
- Pulling units SLU 220  
Capacity 2 x 2 200kN
- Flat jacks 250/50
- Duration: 02-12/2006

### ENGINEER:

MOTT MacDONALD PRAHA Ltd.

### MAIN CONTRACTOR:

Consort. 0306/I Mezno - Chotoviny

### BRIDGE SUPPLIER:

METROSTAV Corp.

### PT, ILM, HL SUPPLIER:

VSL SYSTEMS (CZ) Ltd.

V násypu 339/5

152 00 Praha 5

tel.: +420 251 091 680

fax: +420 251 091 699

e-mail: vsl@vsl.cz

<http://www.vsl.com>